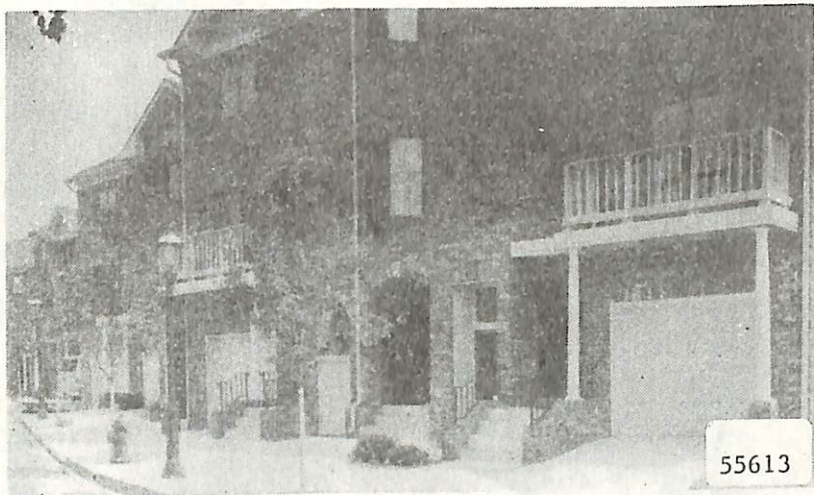


ML# TWN ADD
55613 SOR 17 MEWS LANE

CLS LPR
REN 1500



*Reported
To
Board
Rented*

RMS:04 BED:02 BTH:2 LAV:0 POSS:IMM
HTP:FA HFL:GAS AIR:Y FPL:1 BAS:N ATC:N GAR:1.0A
STY:COND EXT:BRICK DIM: YR:00 TX\$
L/B:L62-84 B102 ASMT L\$ B\$ R\$.00
1ST:CH LR DIN AREA KIT 2 BR LAUND UTIL RM 2 DECK
2ND:
3RD:
GRD LEVEL:
BSMT:
GRA:SO MOUNTAIN JHS:
MID:SO ORANGE HSC:COLUMBIA
PAR:OUR LADY OF SORROWS TER:
EASE: REM:NEW BRICK LUX RANCH ALL APPLIANCES &
CARPET INCL RESERVED SPACE FOR 2ND CAR IMM POSS
1 MO SECURITY 1-2 YR LEASE

EXD:02/13/88 LID:08/13/87 KEY:
OWN:ROBERT C KLEIN 763-4296
SHOW:CALL LR VILLAGE MEWS SALES OFF 762-4230
BRK# 82 P:763-0600 AGT# 83 CB:3 - \$50

S.O. 17 Mews Ln.

1500