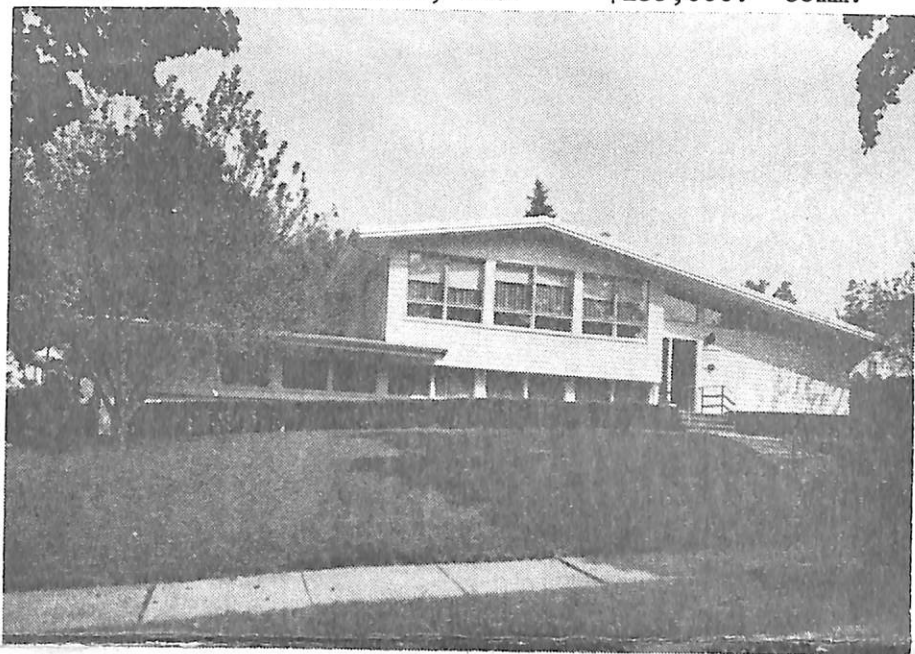


26309 395 Turrell Ave., S.O. \$135,000. Comm.



26309 395 Turrell Ave., S.O. \$135,000. Comm.

Bet: Center St. & Self Pl. (Mini-Medical Bldg.)

Lot 125x90 Lot 101 Blk 173 Level, dry site

Parking-12-14 cars. Zoning class-A-60

L-34.5 B-55.8 '79 Rate 5.57 Taxes \$5029.71 Poss:

1-80 or as arr.

Utilities-water,220 VS,gas,storm sewer,san.sewer

Transp.bus 20,31, S.O.RR Sta.

Terms: All Cash.

Bldg-approx.3,000 sq.ft.total flr area,fr,stone rf,

3 levels,approx.20 yrs,excellent condition

Present uses: Medical Bldg. Suitable: Same or dentist

HA:Gas Central a/c 2 zone.

1st level-waiting rm,consultation rm,office

2nd level-5 operatories,1 powd.rm,1 lab

Grd level-3 rms for add'l prof.office suite (1100
sq.ft.), 1 powd.rm,sep.entrance

Bsmt-dark rm,util.rm,stge rm,fin.bsmt could be used
for waiting rm.

Striking & attractive bldg of Contemp.Design. Excell-
ent condition. Presently used by 2 dentists.--Vari-
ance could be obtained for 3 dentists or 3 parties
in the medical profession. Subject to errors & omis-
sions.

LR:JMW 376-4545 90021009/90020000 (8-50-50-o.a.a.)

Owner:Dennis M. Doyle, DDS, Prem., 763-4302

Comm.395 Turrell Ave.,S.O.

\$135,000.

10/29/79 WITHDRAWN OBL. TO WEICHERT EXP.

4/24/80