

6/9/67 WITHDRAWN

K
R5330 Rm.#100,71 Valley St.,S.O. \$220 per mo. Comm.
Corner 2nd St. - Office Space (3 rm.suite &
Approx.580 sq.ft.Mod.air conditioned,(reception area
including janitorial services.Draperies included.Fireproof
building.1st floor. 1 parking space under cover.
5 year lease commencing 3/1/67.One month security.
Key w/ L.B.

L.B:B & C 763-7333 1/24/67-Exp.4/23/67

Owner:Betwill Corp.,W.Mitchell,Pres.,prem.,762-2810 .

LANDLORD WILL PAY BONUS OF $2\frac{1}{2}\%$ TO BROKER NEGOTIATING
THE LEASE. ✓

Comm.Rm.#100,71 Valley St.,S.O. 3 rm.suite &
reception area \$220 per mo.

4/5/67 Owner very anx. to rent suite in
MODERN off. bldg. Note bonus for broker
negotiating the lease.

R6424 71 Valley St., S.O.

\$504.MO.UNF.Off.#1

\$780.MO.UNF.Off.#2

Rental. No photo.

R6424 71 Valley St., S.O.

\$504.MO.UNF.Off.#1

\$780.MO.UNF.Off.#2

Corner of Second St.

Rental premises consist of two offices, one 550 sq. ft.; the other 850 sq.ft. Rental price of \$11.00 per sq. ft. includes heat, air conditioning, & janitorial service. Subject is a modern elevator building centrally located convenient to rail & bus transportation. Subject to errors & omissions.

LR:HEG 763-5800 2002002/5002002 (CB 2.5 - \$10)

Owner: Classon Realty Corp., By Eugene Lefkowitz, Pres.,
c/o L.R.

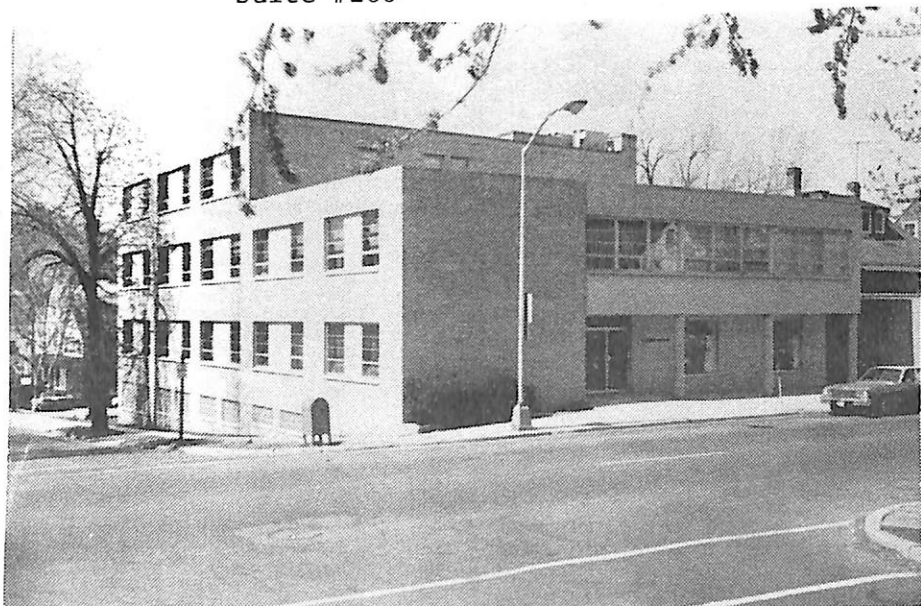
CALL L.R. FOR APPT.

Comm. 71 Valley St., S.O. 2 offices

\$780.MO.UNF.Off.#2

\$504.MO.UNF.Off.#1

R6284 71 Valley St., S O. \$11.00/sq.ft.UNF. Comm. .
Suite #200



R6284 71 Valley St., S.O. \$11.00/sq.ft.UNF. Comm.
N.W. cor. 2nd St. Suite #200

Office 560 sq.ft. in modern elevator building.

Terms of rental: 1 mo. security required.

Immed. poss. Rent includes all utilities, heat, air conditioning, & daily janitorial service. Tax & fuel escalators added to base rent. Term of lease: 2 yrs. Subject to errors & omissions.

4/27/81 RENTED
2/81 Sold

- 355,000

LR:C&L 763-0033 40015001/70015001 (CB 2.5 - \$9.75)
Owner: Classon Holding Company, By: John C. Crowe, Jr.,
Agent, c/o L.R. CALL L.B. TO SHOW.

Comm. 71 Valley St., S.O. Office \$11.00/sq.ft.UNF.