

41639 310 WEST END RD., SOUTH ORANGE

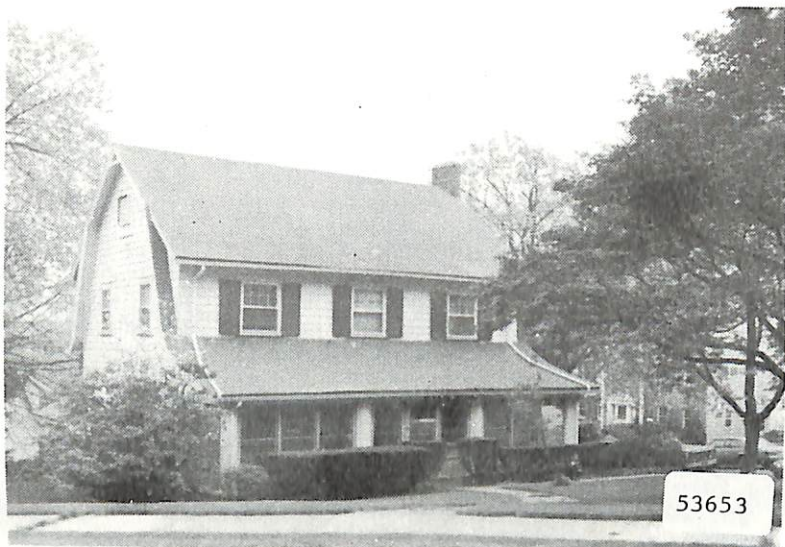


Board of Realtors of the Oranges and Maplewood

Photo by George B. Biggs, Inc.

ML# TWN ADD
53653 SOR 310 WEST END ROAD

CLS LPR
RES 269000



CONTACT 5/16/87
sold 275, 9/11/87

RMS:07 BED:04 BTH:3 LAV:2 POSS:60
HTP:ST HFL:GAS AIR: FPL:1 BAS:Y ATC:Y GAR:2.0A
STY:COL EXT:FRAME DIM:70X150 YR:86 TX\$ 4300
L/B:L213 BLK48 ASMT L\$ 14000 B\$ 34000 R\$ 8.96
1ST:CH LR W FPLC DR NEW E-I KIT LAV JAL PORCH
2ND:3 LARGE BDRMS 2 NEW IMPORTED TILE BATHROOMS
3RD:1 BDRM FULL BATH (OPEN STAIRWAY) STORAGE
GRD LEVEL:
BSMT:REC ROOM SHOWER TOIL LAUNDRY
GRA:SOUTH MOUNTAIN JHS:
MID:SOUTH ORANGE HSC:COLUMBIA HS
PAR:OUR LADY OF SORROWS TER:
EASE: REM:LOVELY LARGE HOME W HIGH-POLISH OAK &
PARQUET FLRS,NEWLY PAINTED INTERIOR & EXTERIOR
NEW E-I ULTRA KITCHEN & BATHS RECESSED LIGHTS
ATTIC FAN BLT-IN A/C IN LR WALK TO SCHOOLS AND
TRAIN NEGD THRU SANDS REALTORS
EXD:10/31/87 LID:04/21/87 KEY:W SANDS 762-7214
OWN:STEVEN D GAST 761-6678
SHOW:LAUVINIA TUMIN 763-1810
BRK# 128 P:762-7214 AGT# 129 CB:2.5% - \$50

S.O. 310 West End Rd. 269,000